

المركز الوطني  
للإحصاء  
والمعلومات

سلطنة عمان



NATIONAL CENTRE  
FOR STATISTICS  
& INFORMATION

SULTANATE OF OMAN

# NCSI's GeoPlatform Geo-Portal for Oman



## Presentation Outline

- What is GeoPlatform
- NSDI Mission
- GeoPlatform Framework
- GeoPlatform Features
- GeoPlatform in Mission
- Q & A

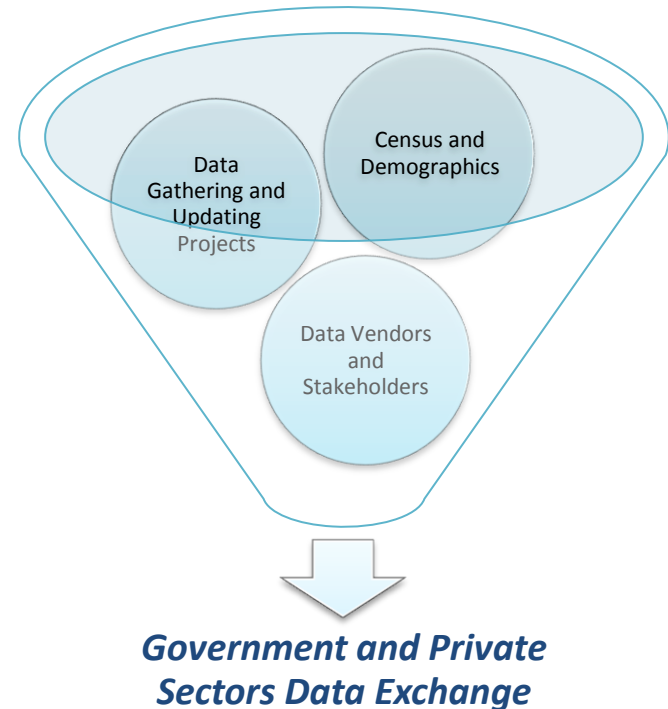


NATIONAL CENTRE  
FOR STATISTICS  
& INFORMATION

# NCSI's GeoPlatform

# Background

- NCSI has a rich geospatial database with multiple data layers including demographic data
- NCSI via multiple initiatives of cooperation has been collecting / updating data from other stakeholders
- NCSI is committed for sharing the data with other government entities
- NCSI is committed for standardization and interoperability of spatial data and OGC compliant services



# NSDI Mission



NATIONAL CENTRE  
FOR STATISTICS  
& INFORMATION

**G2G**

## ***Government to Government***

By creating a shared framework for data, IT, Standards, Technology and Knowledge Sharing with government sector to supports decision making and E-Gov initiatives.

Ex: “GeoPlatform”

**G2B**

## ***Government to Business***

By creating an infrastructure supports business sector to encourage and improve investment and business trends.

Ex: “Unified Investment Portal (Planned)”

**G2C**

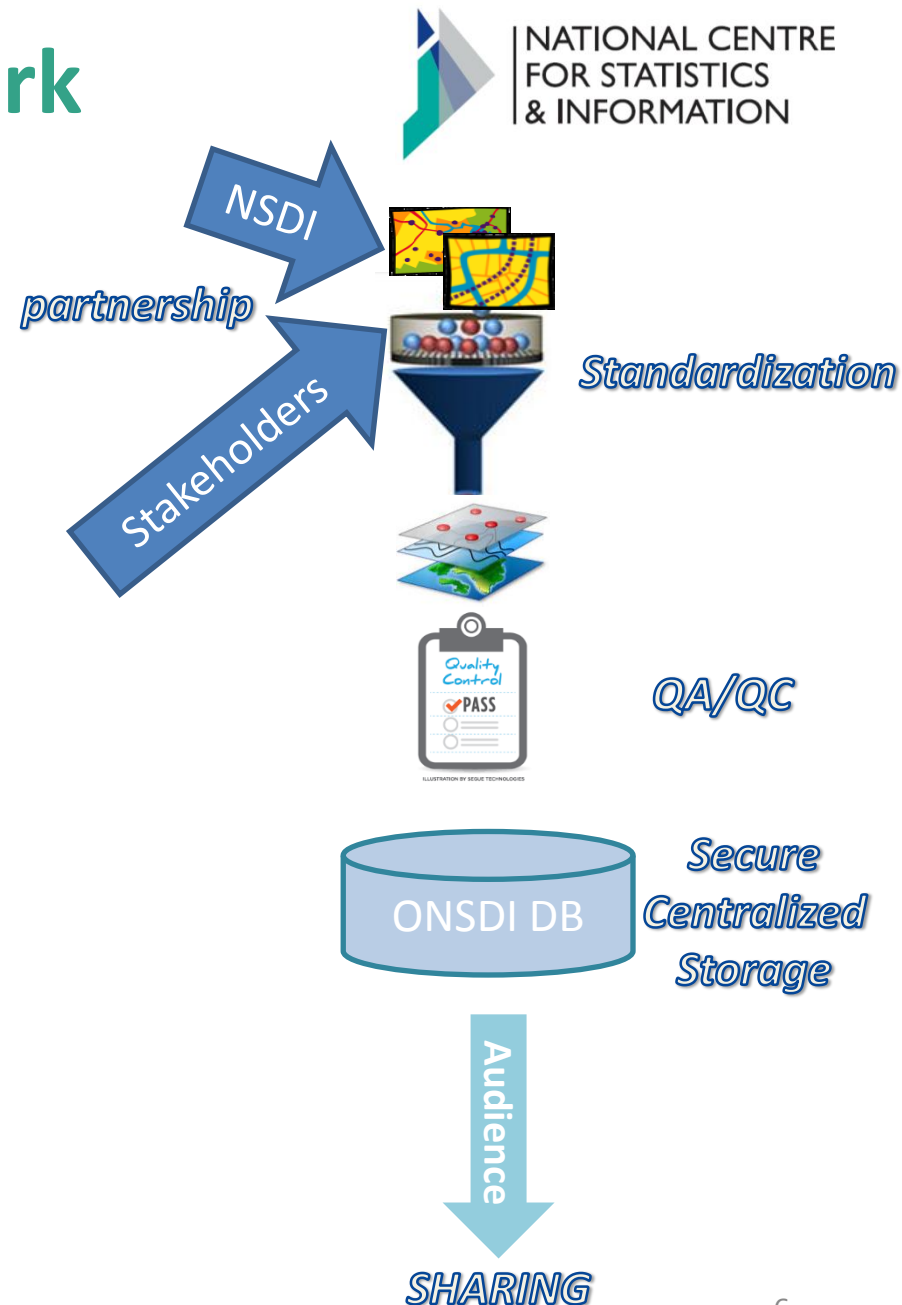
## ***Government to Citizens***

By creating different apps and services targeting citizens which exposes the rich data to serve different needs and maximizing the crowd sourcing for better interaction.

Ex: “NCSI GEO, TourOman (Other apps are planned)”

# GeoPlatform Framework

- GeoPlatform is a spatial electronic interface for data and services sharing
- The GeoPlatform mainly acts as a **Data Clearinghouse**
- NCSI aims through the Geoplatform to:
  - Enhance partnership
  - Facilitates Standardization
  - High quality data and services
  - Secure centralized storage
  - Sharing

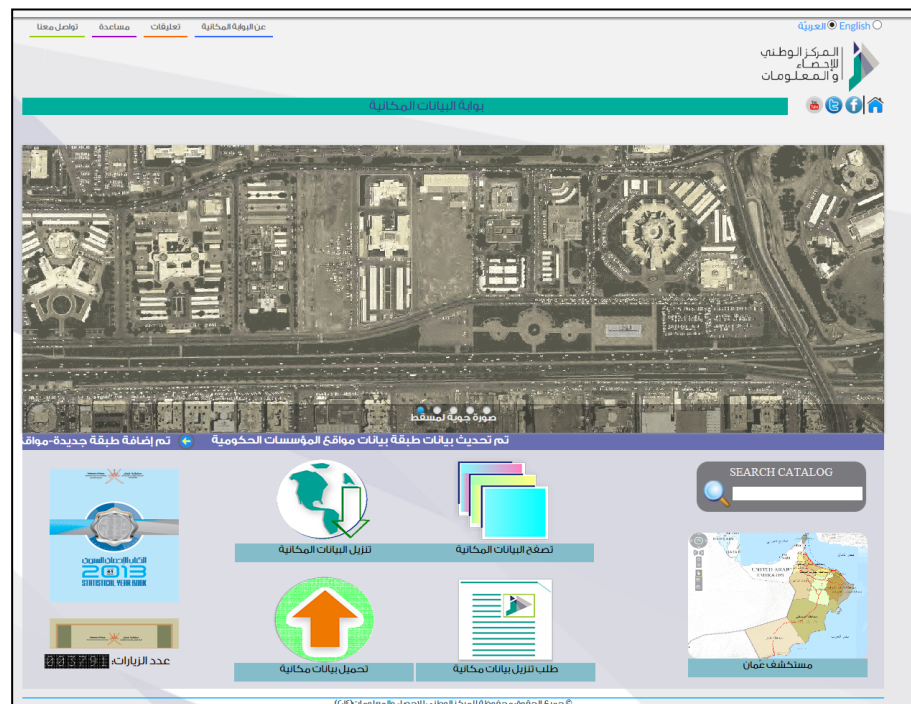


# GeoPlatform Framework cont.



NATIONAL CENTRE  
FOR STATISTICS  
& INFORMATION

- GeoPlatform is a secure window to the NSDI's Database
- GeoPlatform users can use it to
  - View the Data via Oman Explorer
  - Download required Data
  - Upload Data
  - Review Data's Metadata



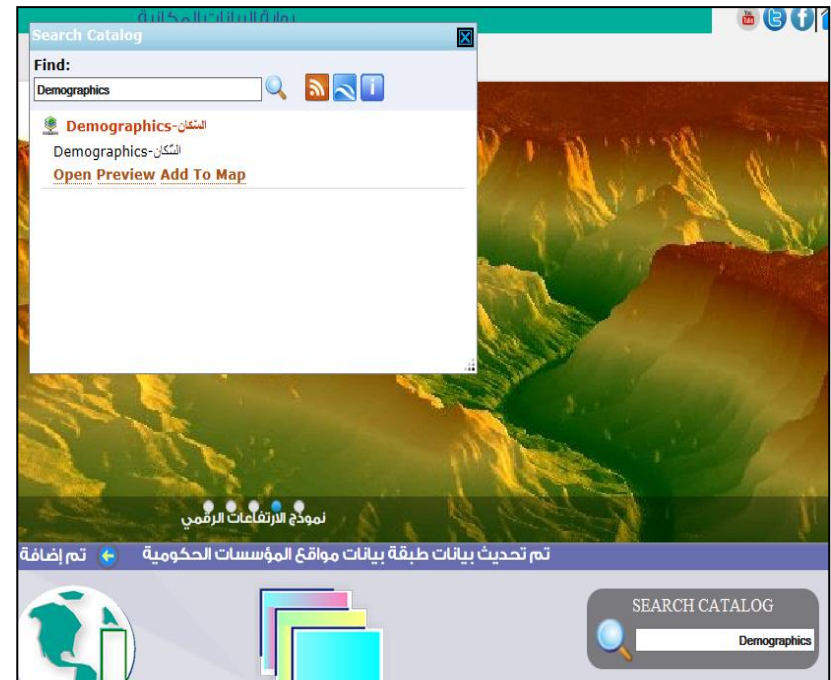
# GeoPlatform Features



NATIONAL CENTRE  
FOR STATISTICS  
& INFORMATION

## Search

- Search catalog will do a quick search against the data and services distributed by NCSI
- The search looks for a keyword and returns records that have the keyword in the title or abstract description of the data and services





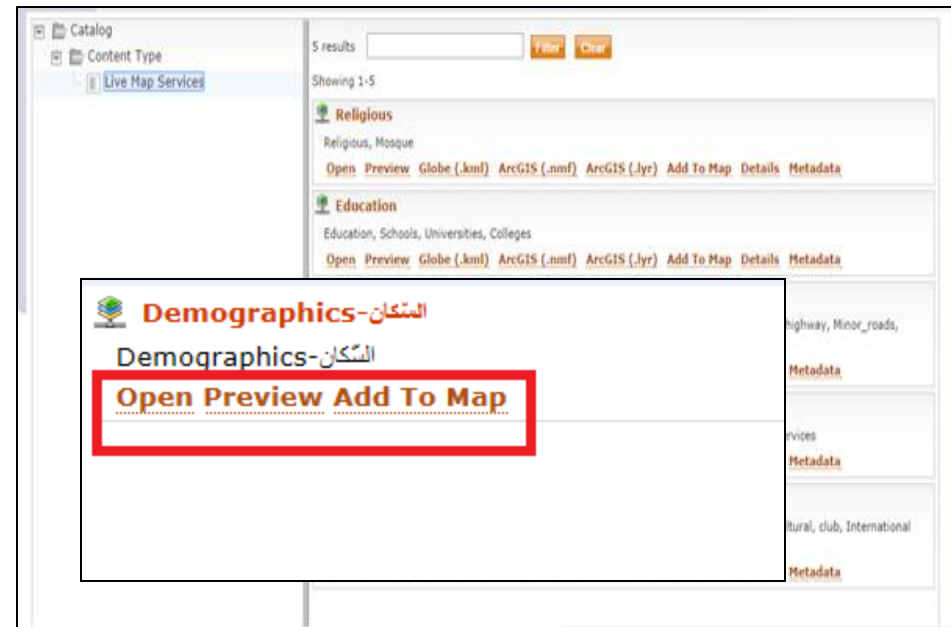
# GeoPlatform Features cont.



NATIONAL CENTRE  
FOR STATISTICS  
& INFORMATION

## Browse Catalog

- Browse allows users to view the catalog of the metadata:
  - Open: view metadata of the services.
  - Preview: to physically view the representation of the data on a map viewer
  - Add to Map



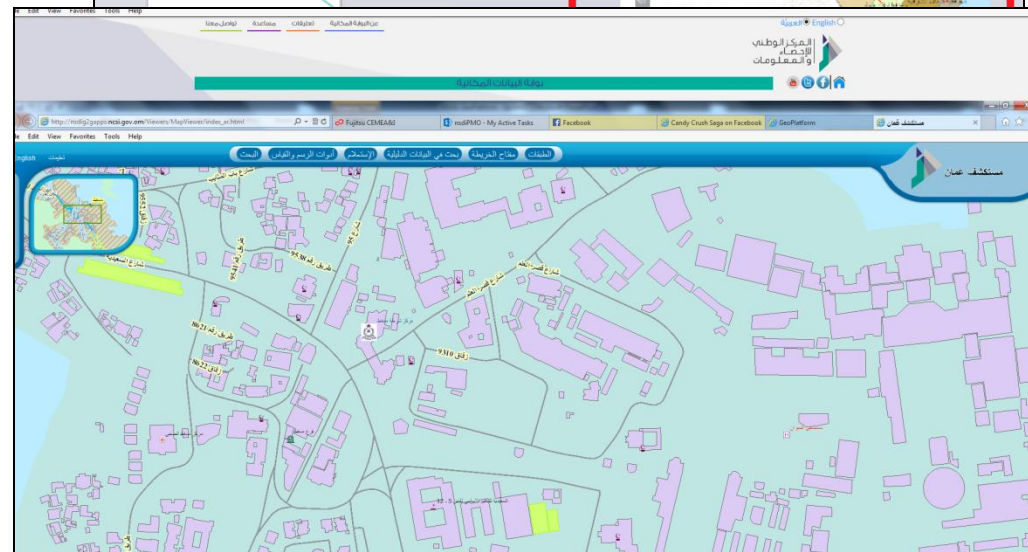
# GeoPlatform Features cont.



NATIONAL CENTRE  
FOR STATISTICS  
& INFORMATION

## Oman Explorer

- Oman Explorer has the following features:
  - Map Viewer
  - Table of contents with list of all layers hosted by NSDI
  - Map Legend
  - Geoportal search widget
  - Identify Widget
  - Draw and measure tool
  - Navigational tools



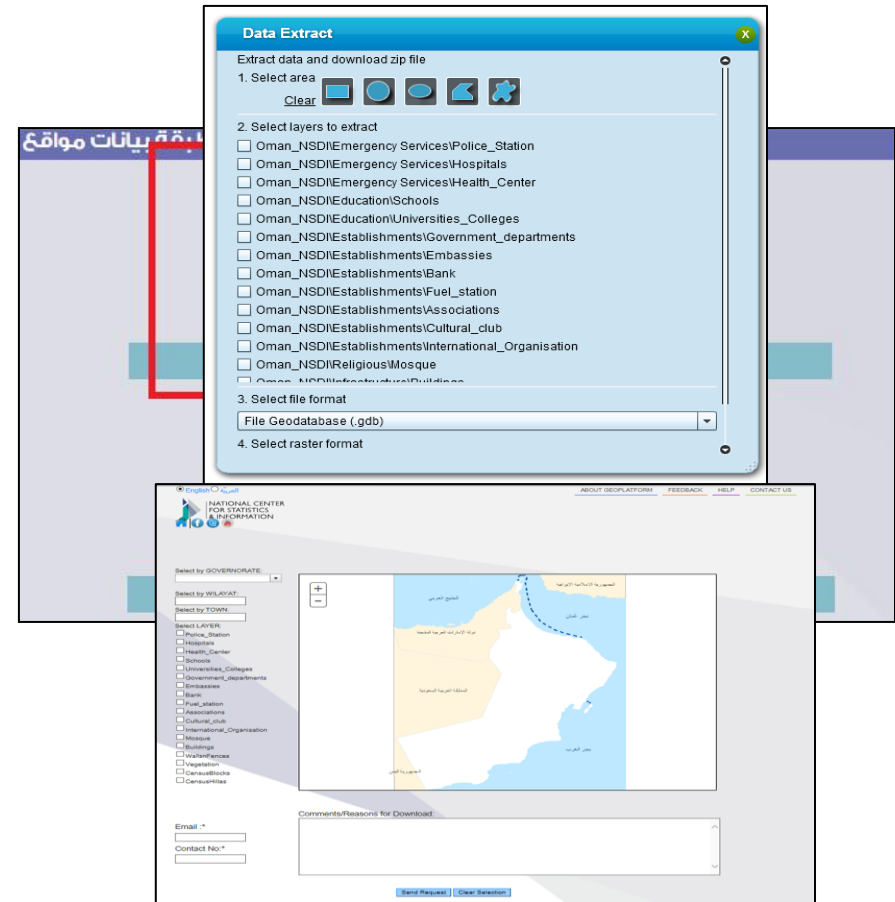
# GeoPlatform Features cont.



NATIONAL CENTRE  
FOR STATISTICS  
& INFORMATION

## Download Data

- Interactive Download
- Download by Request
- Bring specific domain geospatial web services into your desktop directly





## Upload Data

- upload the data to be distributed as a service in NSDI
- This service will undergo the authentication and authorization process

### Upload Data Instructions

Stakeholders/Users are requested to upload their GeoSpatial data in below supported formats

#### Shape File (\*.shp) :

Zip the files that comprise the shapefile you want to upload into a ZIP archive (.zip) OR RAR archive (.rar) using the standard ZIP file/RAR file creation tools on your computer

Note: The ZIP/RAR archive must contain the .shp, .shx, .dbf, and .prj files that comprise the shapefile.

#### ESRI Geodatabase (\*.gdb) :

The geodatabase is the common data storage and management framework for ArcGIS. It combines "geo" (spatial data) with "database" (data repository) to create a central data repository for spatial data storage and management.

Zip the files that comprise the Geodatabase you want to upload into a ZIP archive (.zip) OR RAR archive (.rar) using the standard ZIP file/RAR file creation tools on your computer

Other spatial data formats supported are \*.mdb, \*.csv, \*.xml, \*.lyr, \*.xls, \*.txt, \*.docx, \*.ppt, \*.pdf

Note: Uploading speed may vary depending on the Network traffic, size of the file (Maximum size allowed is 300MB)

---

Select a File to Upload :

Choose a file

# GeoPlatform Features cont.



NATIONAL CENTRE  
FOR STATISTICS  
& INFORMATION

## Feedback Page

- NCSI will be pleased to get feedback from community. For improvement
- NCSI urges users to provide valuable feedback and suggestions

We are looking for your feedback, please provide any suggestion or comment

Name: \*

Email Address: \*

Contact No:

Feedback Type

Service Enhancement ▼

Message: \*

**SUBMIT**

\* : a required field

# Using GeoPlatform



- URL: <http://nsdig2gapps.ncsi.gov.om/Geoplatform/>
- For Download and upload users registration is required
- All Government sectors will receive official letters by Jan, 2015.
- Other sectors should apply or submit their requests via Feedback page.

# Geoplatform in Mission



- The GeoPlatform is the first step in a long term plan for evolving and upgrading the GeoPlatform to become ONSDI Portal which ensures government partnership, standardization and the base entity for data sharing between NSDI, authorized users and public users
- Geoplatform offers a centralized hosting infrastructure to serve all stakeholders
- All government entities are welcome to enrich the GeoPlatform database with their data



# *Q&A Session*



شكراً

THANK YOU